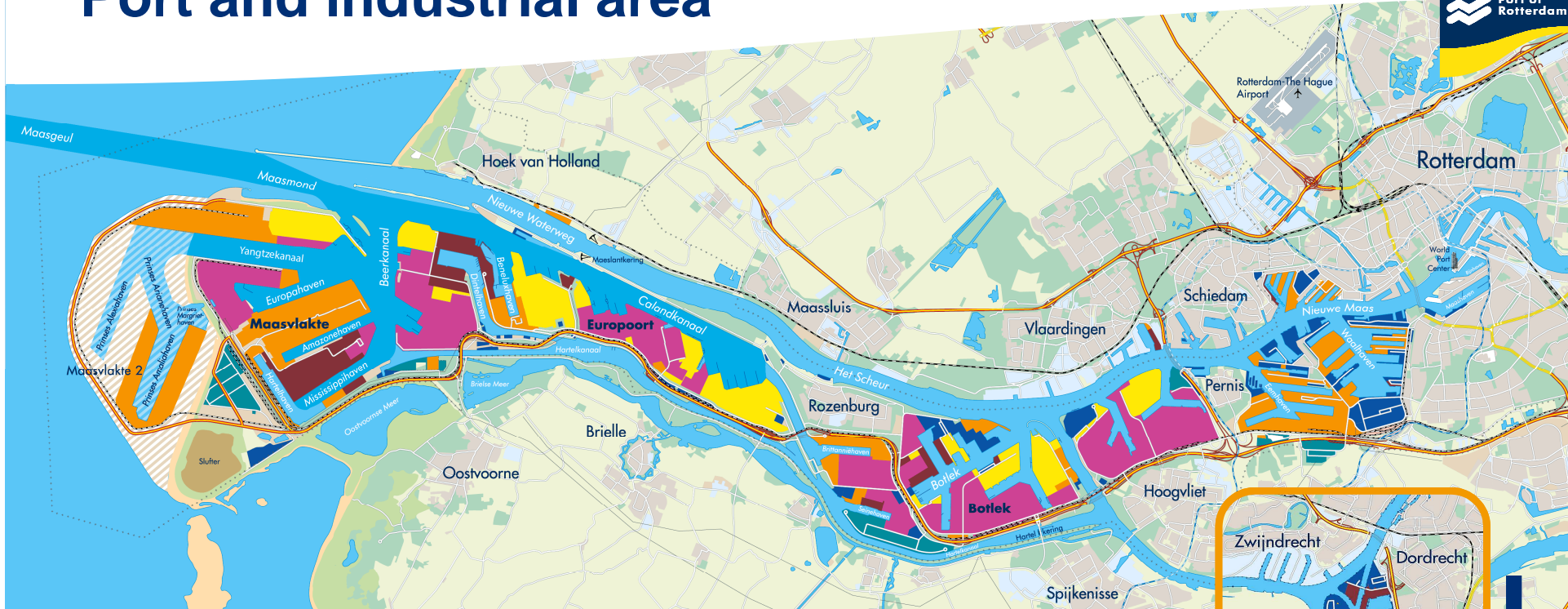


Rotterdam & Rail Freight

June 24, 2014

Victor Schoenmakers, European & International Affairs
Port of Rotterdam

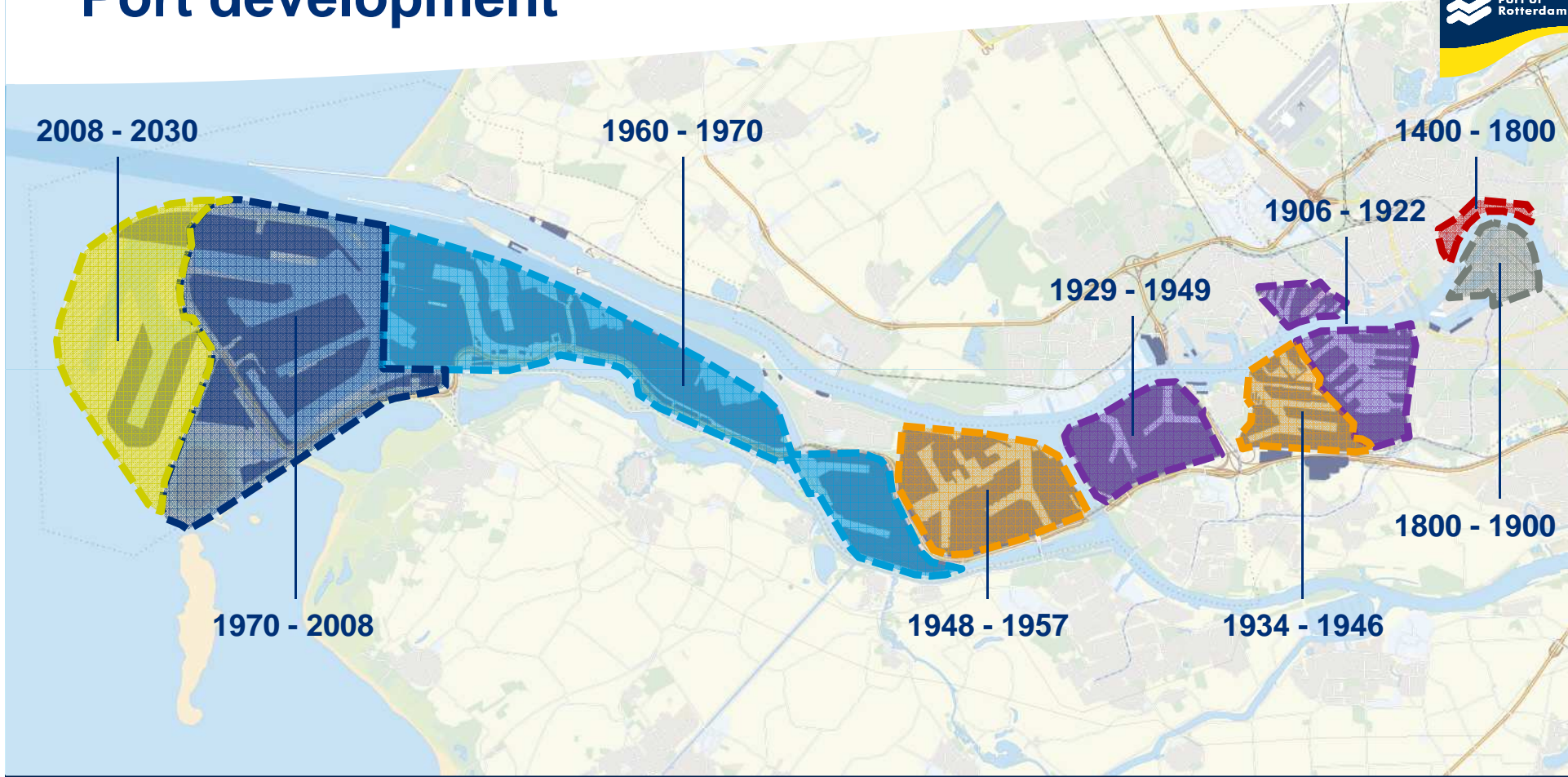
Port and industrial area



Over 40 kilometres!



Port development



Port areas



Maasvlakte



Waal-/Eemhaven



Europoort



Botlek

Trends and developments



- Growth in volume and terminal capacity
- Hinterlandconnections
- Increased cooperation integration of services



ULCC (400 x 60 x 15,5 m) Evelyn Maersk 15,000TEU

Room for port development



- Port Vision 2030
- Intensification of existing port area
- Seaports in South West Netherlands, cooperation.
- Maasvlakte 2
- Hinterland connections



Maasvlakte 2

Maasvlakte 2

- Access via Yangtzehaven: 600 m. wide and 20 m. deep
- Gross size: 5,000 acres (= 20% expansion of port)
- Use: Containers and Industry
- Cost: € 3 billion

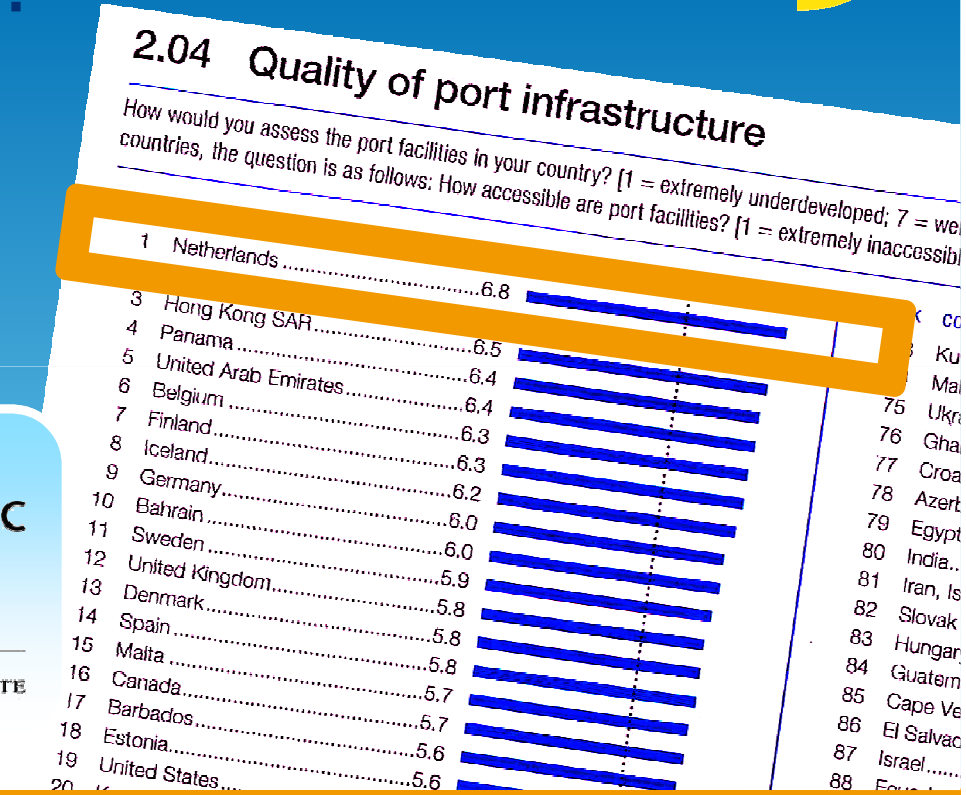


Maasvlakte 2

The Quality of port infrastructure in the Netherlands is world-class...



In the Global Competitiveness Report, a leading study of the competitive strength of various countries conducted by the World Economic Forum, the Netherlands ranks 1 worldwide



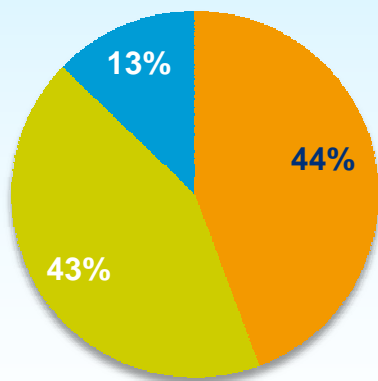
Global Competitiveness Report (2012 - 2013)

Modal Shift Maasvlakte Rotterdam (GE scenario)



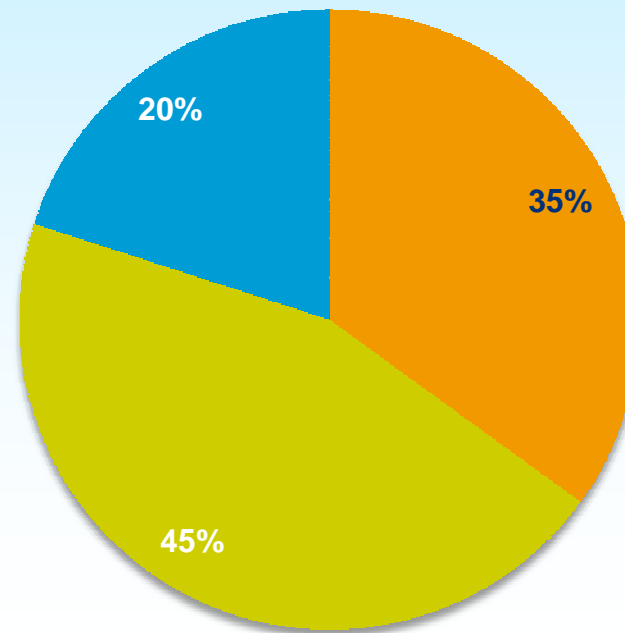
2012

Total 4.8 m TEU



2035

Total 17 m TEU

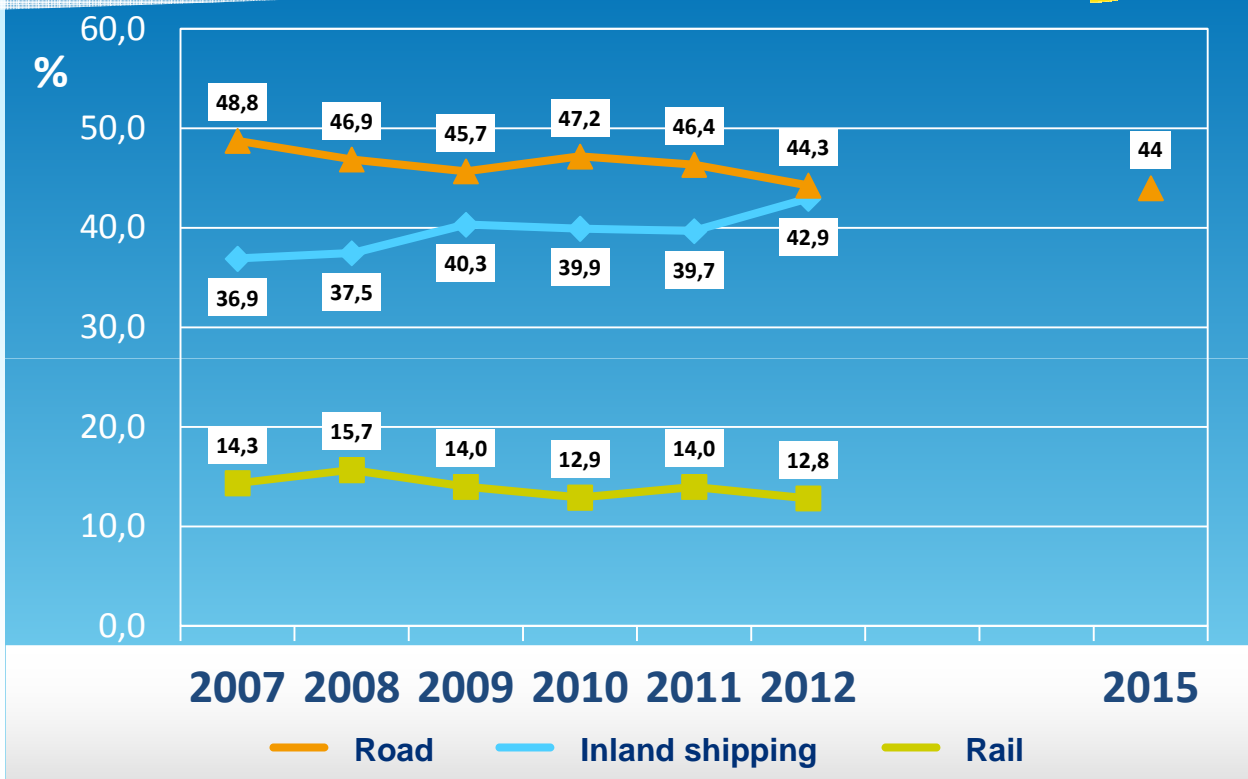


- Road
- Inland shipping
- Rail

Modal split containers Maasvlakte

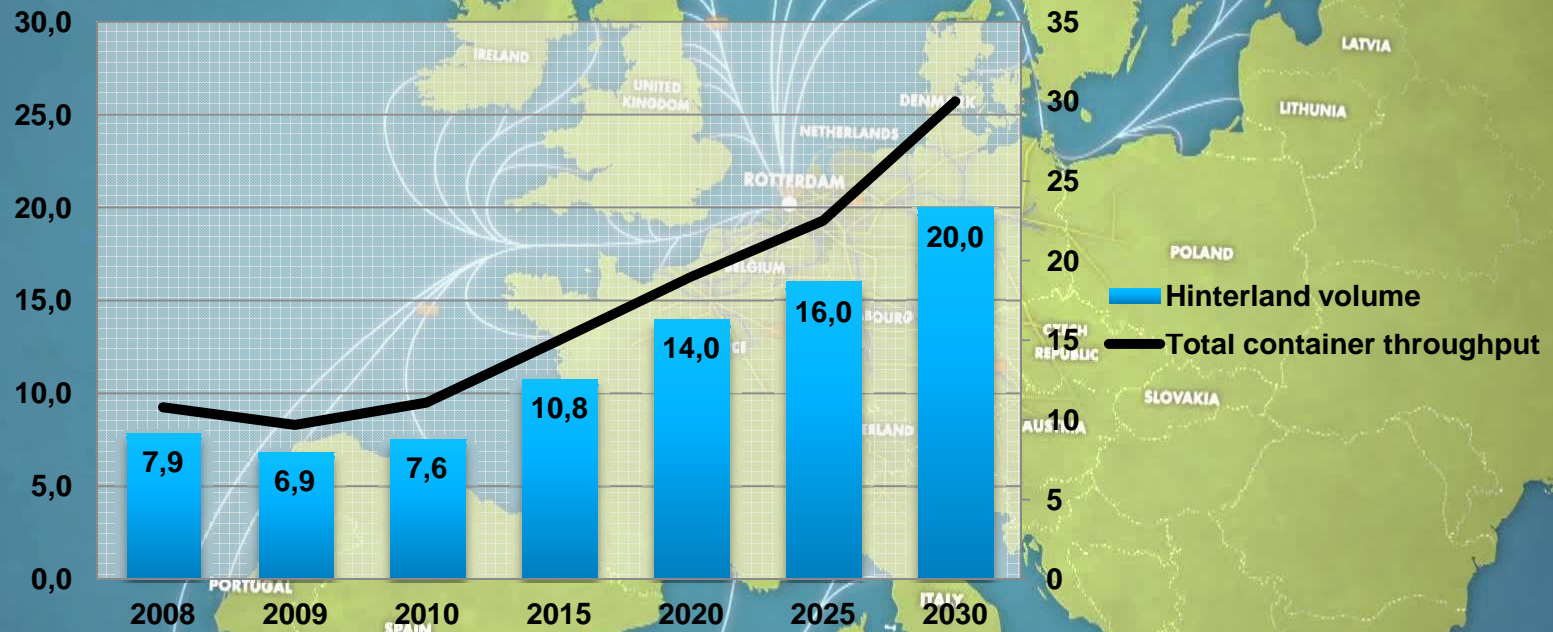


- Target for 2035 = 35% by road



Source: terminals survey

Expected growth in container throughput



Unit: mIn TEU

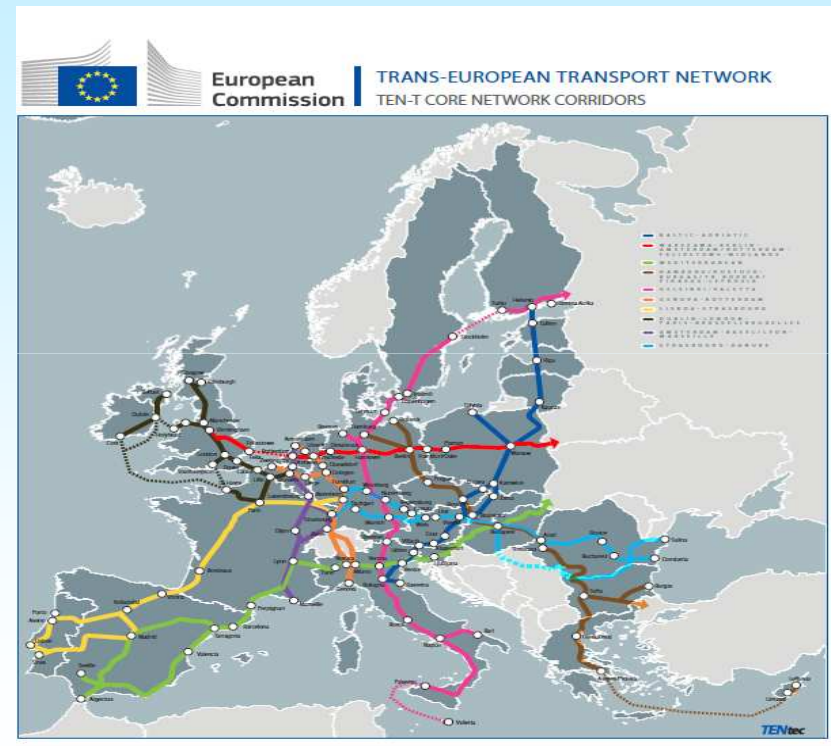
European Transport Policy



- **Corridors**

- North Sea – Baltic
- North Sea – Mediterranean
- Rhine – Alpine

- **Connecting Europe Facility**
€23 bln.



Main projects Rotterdam



- Calandspoorbrug (Rhine – Alphine)
- Railway-connection Rotterdam – Antwerpen (North Sea – Mediterranean)
- Container Logistics Maasvlakte (CLM) (Rhine – Alphine)
- Railway-connection Zevenaar – Emmerich – Oberhausen (Rhine – Alphine)



Thank you for your attention.



Victor Schoenmakers
Port of Rotterdam Authority
Director European & International Affairs
VA.Schoenmakers@portofrotterdam.com
+31 (0) 10 252 14 84