



Eric Lambert

10/2000 - today:

CFL Multimodal – CCO Combined Transport

06/2007 – 01/2012: ACTS Luxembourg - CEO

**10/1987 – 10/2000: Arcelor Mittal, Sales Dept. – Transport
Manager**

09/1982 – 10/1987: Officer Belgian Army – Pioneer

International:

President of the Combined Transport Group/UIC

**Representative of the CFL Group within the Railway Advisory Group of the Rail Freight
Corridor 2**

**Member of the Experts Group of the European Commission on Aerodynamics of heavy
goods vehicles**



GLOBAL
RAIL
FREIGHT
CONFERENCE



SEAMLESS TRANSPORT CHAINS THROUGH HARMONISATION

Success Stories and Global Perspectives for Rail Freight

CFL multimodal: Connectivity between Hinterland & Corridors



GRFC 2014 VIENNA

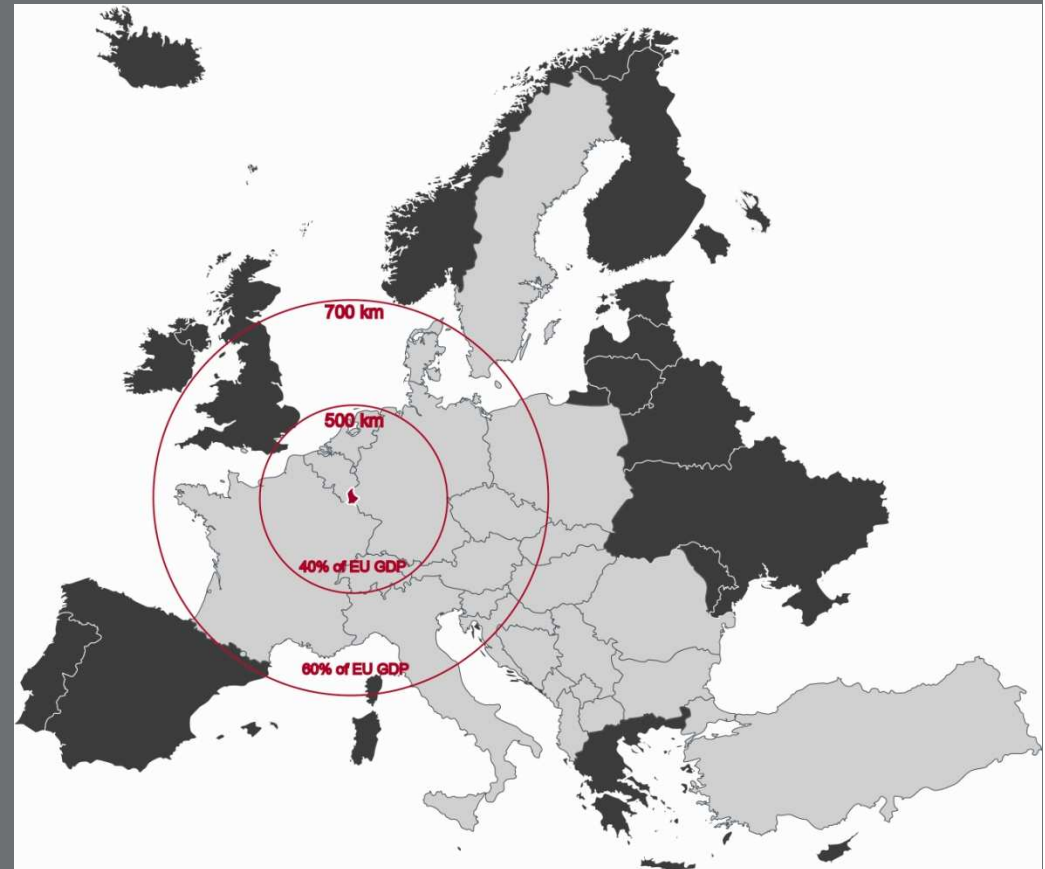


23-26 June 2014

Logistics hub Luxembourg

Why Luxembourg

- Beneficial regulatory & administrative framework
- Wide availability of logistics know-how
- Great experience in building customised strategic partnerships
- Dedicated logistics parks allow easy set-up of new value added services



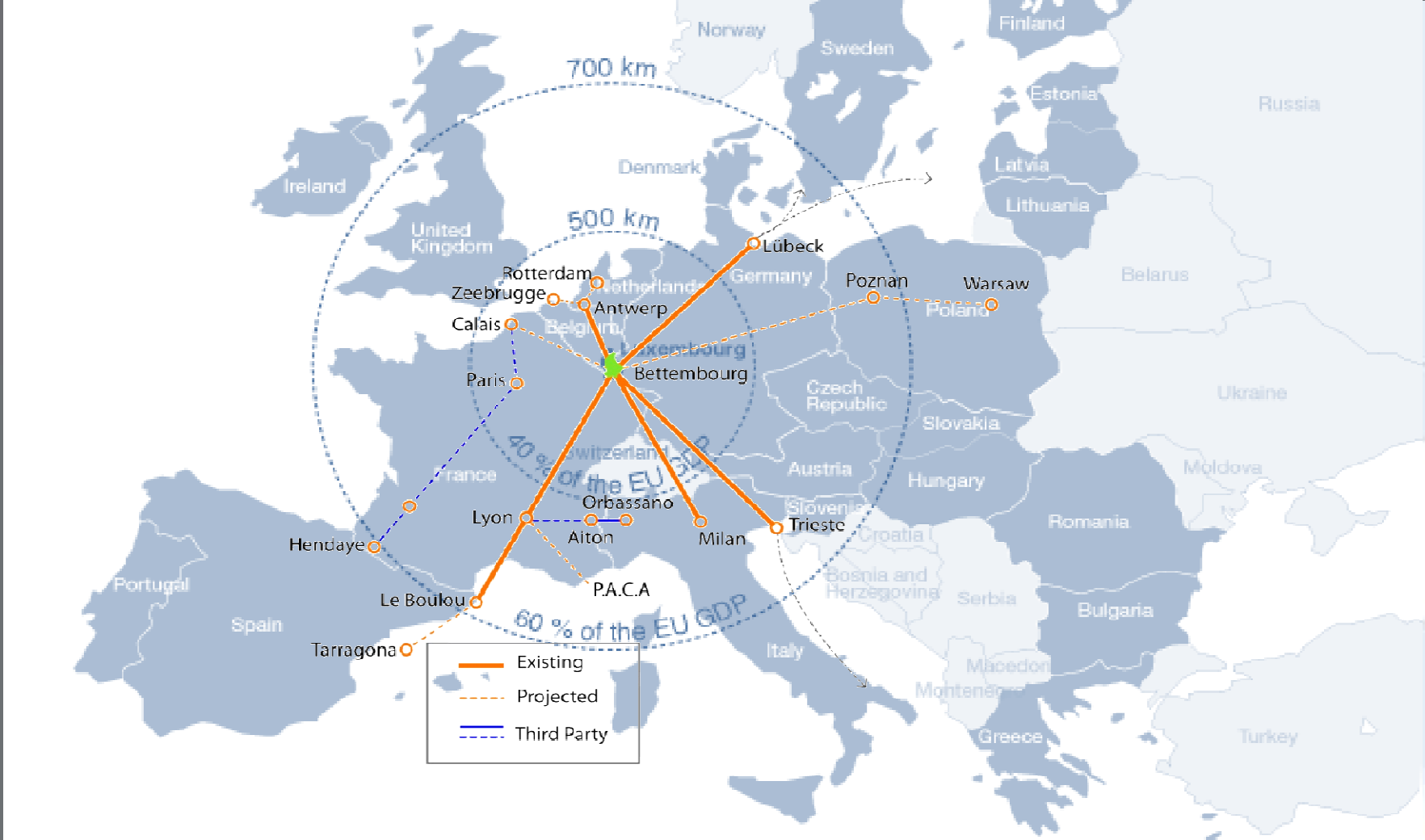
Luxembourg as European Hub

Development Strategy as:

- European hub & spoke terminal with multimodal feeder services
- Pan-European rail transportation hub
- Logistics platform for the Hinterland of North-Sea ports (Rotterdam, Zeebrugge & Antwerp)
- European hub for distribution and value added logistics activities



Road – Rail multimodal network





CFL freight activities
Employees : 1000
Turnover 2013 : 202 M€

One stop shop for supply chain engineering for customers' individual needs

RAIL

- Pan- European Conventional rail freight
- Pan- European Combined rail freight
- Regional train feeder services in Luxembourg & Lorraine greater area
- Maintenance workshop

LOGISTICS

- Road transport FTL / LTL
- Regional road distribution
- Parcel services / Express
- Warehousing
- Customs clearance
- Air- & sea-freight commissioning
- Container sales & rental

INFRASTRUCTURES

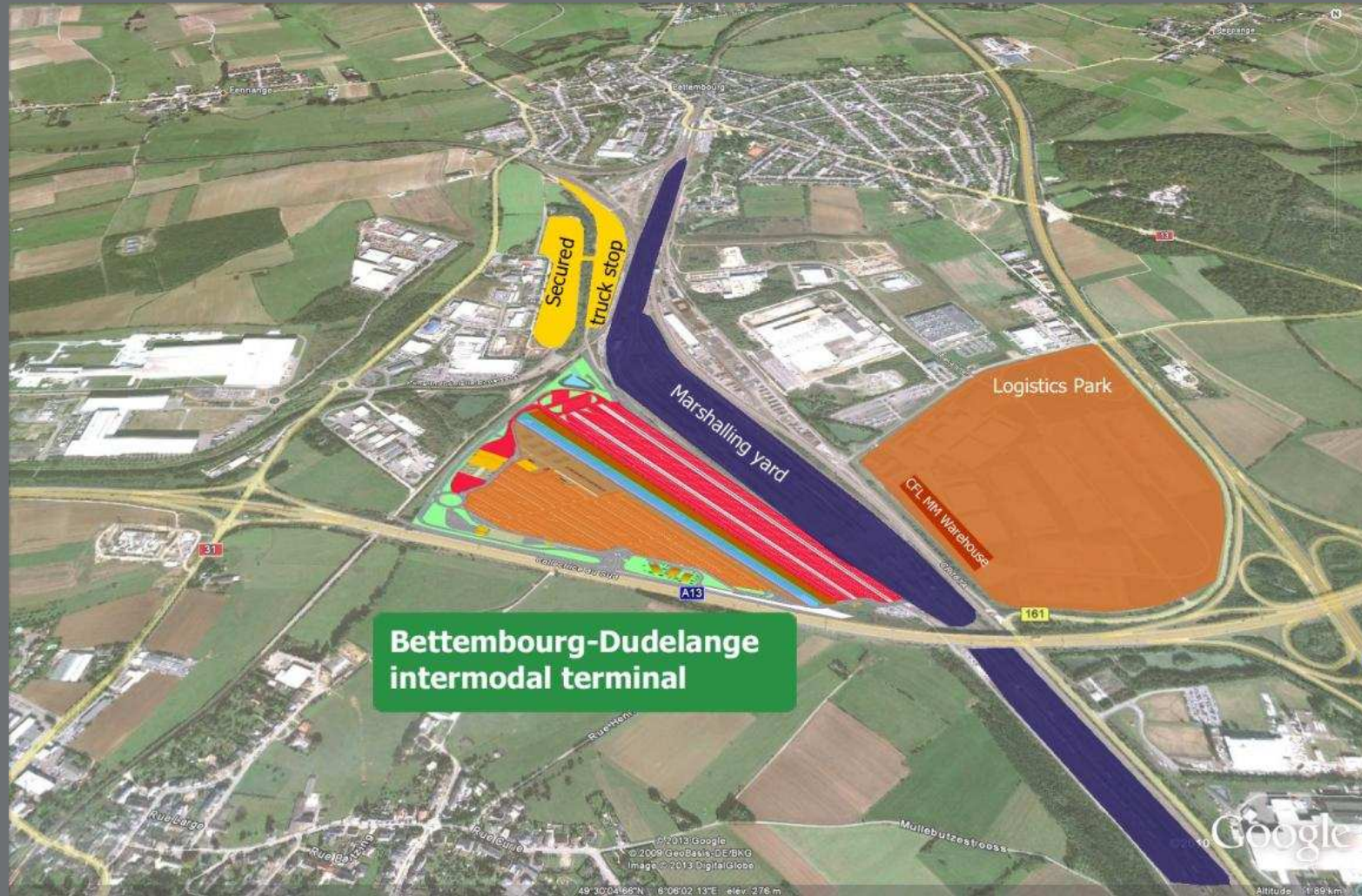
- Intermodal terminal operator
- Modalohr terminal operator
- Shunting yard operator
- Warehouses
- Cross dock facilities

Logistics service offering

- Warehousing facilities of 45,000 m²
- Stock management & archival services
- Handling, packaging & picking
- Freight forwarding & global transport solutions by air & sea
- Customs agency services



Infrastructure terminal horizon 2016

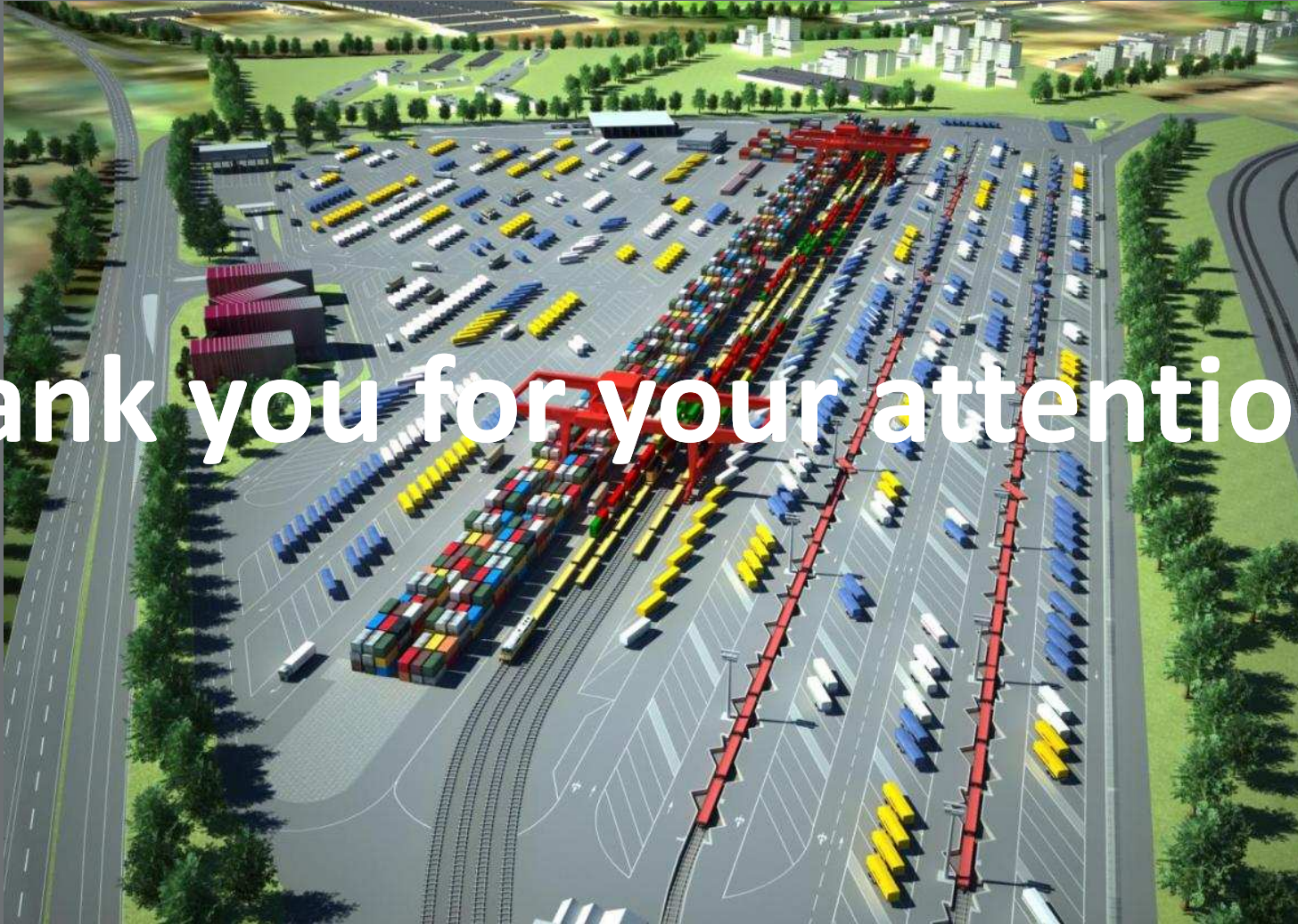


Infrastructure terminal horizon 2016

- New multimodal terminal
4 railway tracks (700 m)
2 rail motorway platforms (700 m)
2 gantry cranes
- yearly capacity of 300,000 containers
& 300,000 trailers
- New central warehousing facilities
surface: 35,000 m²
centralisation of warehousing
activities on one single site at
Eurohub South



Infrastructure terminal horizon 2016



Thank you for your attention !